



LINDISFARNE

YORK ROAD

PROMENADE



LINDISFARNE PRIVATE HOTEL

Telephone
2923

THE PROMENADE
BRIDLINGTON

Grams:
Stormont
Lindisfarne
Bridlington

Resident Proprietors: Mr. and Mrs. H. STORMONT.

PLAIN YORKSHIRE

WE do not base our claims to your notice by advertising that we have the "best," the "finest," or an "unrivalled" position on the sea-front in Bridlington. We are not on the sea-front, but as there is only the length of York Road (about 70 yards), we are within a very short distance of it, and many of our bedrooms have sea-views, chiefly tho' at the rear of the house.

We claim, however, that we give our Visitors comfort, attention, and excellence of food; variety and choice at Breakfast, Lunch and Dinner; none but the Best English Meat is served, Pure Wiltshire Butter, New-laid Eggs from farms in the district; good, fresh Fish.

HOT and COLD WATER, also ELECTRIC LIGHT installed in all bedrooms. Gas Fires are fitted in several rooms on the first floor, and on cool evenings in Spring and Autumn coal fires are lighted in the Lounges.

The kitchen is under family supervision, and every care is taken to ensure pleasure in eating.



VIEW OF GARDENS, SEA AND PAVILION FROM BEDROOMS AT REAR OF HOUSE.

PLAIN YORKSHIRE—*continued*

This attention to food and comfort is a far more important item for the enjoyment of your holiday than an extensive sea-view; yet we are within 70 yards of one of the most beautiful bays in England and a view of that fine headland, FLAMBOROUGH HEAD.

At the end of York Road there are the golden sands for which Bridlington is known, and visitors may either hire a tent on the sands or dress in the Hotel and walk to the beach for a bathe.

TENNIS COURTS are but a few yards on one side of the Hotel, BOWLING GREENS and PUTTING GREENS a few yards on the other side.

The ROYAL PRINCE'S PARADE is only a two minutes' walk; the Harbour, from which Visitors may enjoy the safest boating and fishing in the world, is but a five or six minutes' walk.

There is an 18-hole Golf Course, and 'Buses run by the Hotel to it.

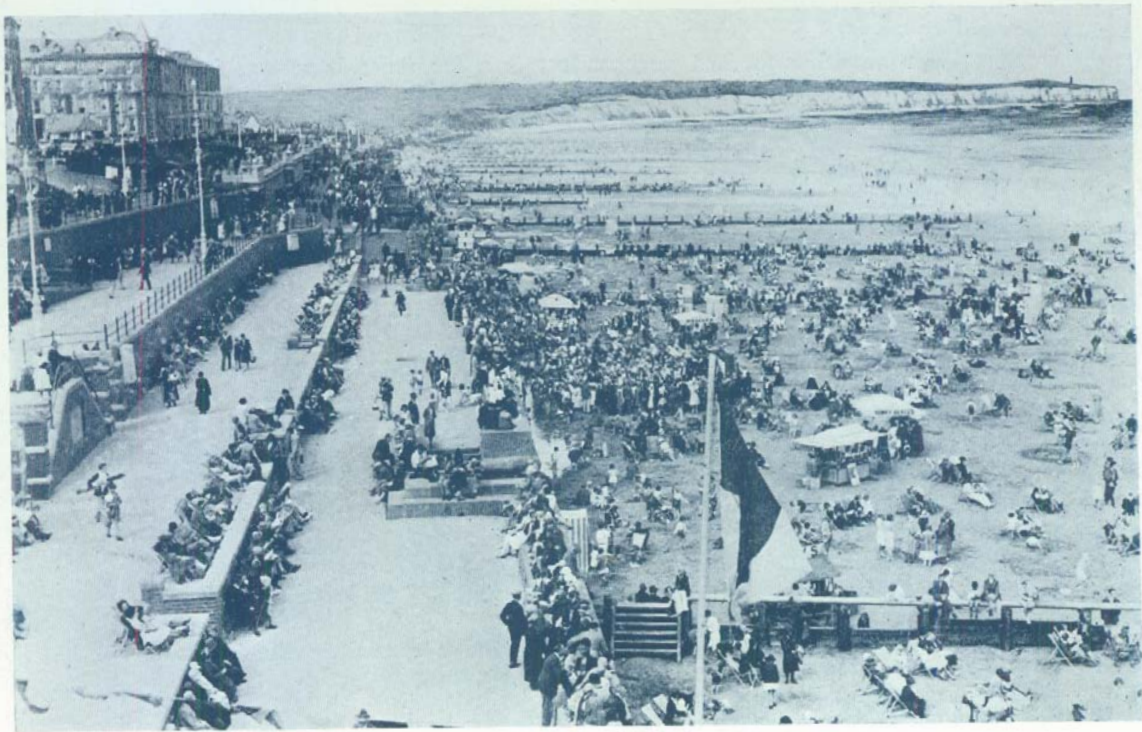
Quite close to us also are several Entertainment Halls, Cinemas and Dance Halls, and if Visitors wish to stay to a late Dance there is no restriction; all we ask is that they retire quietly, so that other Visitors already asleep are not disturbed.

Several Garages, one only 20 yards away.

The old-world open market in King Street is held every Wednesday and Saturday—just a few minutes' walk.

Our position, therefore, is one of the most central in the Town for your entertainment and amusement from morning to night.

In a sentence, COMFORT, EXCELLENCE OF FOOD, ATTENTIVE SERVICE, COMBINED WITH A MODERATE CHARGE.



VIEW FROM END OF YORK ROAD: SANDS AT LOW TIDE AND FLAMBOROUGH HEAD IN DISTANCE.

1934
TARIFF

Sep. 1/34

Double Bed for two persons:

Per week.

Per day.

1st floor:

70/64 70/- per wk

2nd floor:

66/6

3rd floor:

60/-

Single Bedrooms:

Per week.

Per day.

1st floor:

2nd floor:

3rd floor:

For children occupying the same room as parents:—

To 8 years of age, half tariff; 9 to 14 years of age, three-quarters tariff.

Early morning Pot of Tea, 4d. per person.

Hot Bath, 9d. each.

Meals served in Bedrooms, 6d. each extra.

Day commences after Lunch and terminates with it on day of departure, but Visitors arriving before Lunch may have it in Hotel.

On day of departure kindly pack luggage before Noon, so that the room may be prepared for incoming Visitors.

No liability accepted by Proprietors for valuables unless given in their charge and a receipt obtained.



PART OF DINING ROOM.

HOURS OF MEALS

WEEKDAYS.

Breakfast (3 Course)	9 a.m.
Lunch "	1-15 p.m.
Afternoon Tea 	4-30	to 5 p.m.
Dinner (5 Course)	6-30 p.m.

SUNDAYS.

Breakfast 	9 a.m.
Dinner 	1-15 p.m.
High Tea 	5-45 p.m.

Tea, Coffee and Biscuits served in the Lounge every evening
at 10 p.m.

—
Separate Tables.

—
Staff off duty at 10-30 p.m.





HOT AND COLD WATER IN ALL BEDROOMS.

BOWLING
GREEN &
GARDENS

TENNIS
COURTS

PRINCESS ST.

PROMENADE

HARBOUR

PRINCE ST.

CLIFF ST.

REGENT T.

FORT TER

LINDISFARNE.

YORK RD.

CARLISLE RD.

ALBION RD.

HOLY
TRINITY
CHURCH

PRINCE'S PARADE

TERRACES

SANDS & SEA

PIER

NORTH

